

City of Niagara Falls

**Buffalo Avenue Industrial Corridor
Proposed Brownfield Opportunity Area**

**Public Workshop
July 31, 2007**



Extend LASALLE Expressway will bypass Buffalo Avenue route ONLY TO HYDE PARK BLVD

Historical Designations

Current Contamination Pollution Pemco

LIGHT INDUSTRY HOTEL RESTAURANTS ETC.

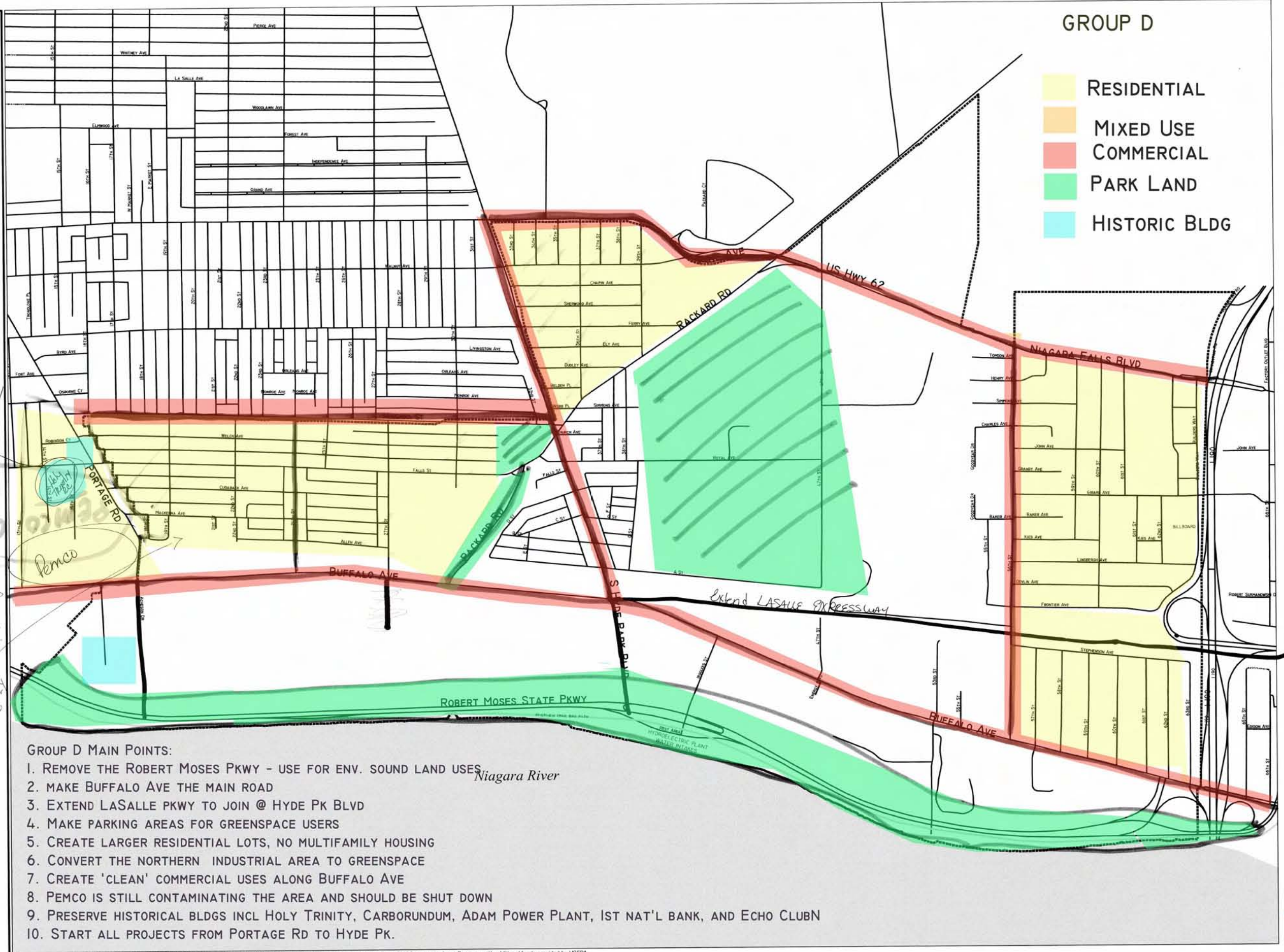
SINGLE FAMILY OWNERSHIP NO MULTIFAMILY HOUSING

START ALL NEW PROJECTS + Remediation from Portage Road to Hyde Park

LABELLA
Associates, PC
in association with
Timberidge and Wolfe, LLP
Luh Consulting Services

GROUP D

- RESIDENTIAL
- MIXED USE
- COMMERCIAL
- PARK LAND
- HISTORIC BLDG



GROUP D MAIN POINTS:

1. REMOVE THE ROBERT MOSES PKWY - USE FOR ENV. SOUND LAND USES
2. MAKE BUFFALO AVE THE MAIN ROAD
3. EXTEND LASALLE PKWY TO JOIN @ HYDE PK BLVD
4. MAKE PARKING AREAS FOR GREENSPACE USERS
5. CREATE LARGER RESIDENTIAL LOTS, NO MULTIFAMILY HOUSING
6. CONVERT THE NORTHERN INDUSTRIAL AREA TO GREENSPACE
7. CREATE 'CLEAN' COMMERCIAL USES ALONG BUFFALO AVE
8. PEMCO IS STILL CONTAMINATING THE AREA AND SHOULD BE SHUT DOWN
9. PRESERVE HISTORICAL BLDGS INCL HOLY TRINITY, CARBORUNDUM, ADAM POWER PLANT, 1ST NAT'L BANK, AND ECHO CLUBN
10. START ALL PROJECTS FROM PORTAGE RD TO HYDE PK.

We Need MIDDLE CLASS HOUSING LARGER LOTS

SAVE OUR HISTORICAL BUILDINGS Holy Trinity Adam Power Plant Carborundum 1st National Bank Echo Club

This map was prepared for the City of Niagara Falls, the New York State DOS and the New York State DEC with State funds provided through the Brownfield Opportunity Areas Program, with additional funds provided by USEPA.